



**MAKING
EXQUISITENESS
A PART OF YOUR
LIFESTYLE**





As important as they are, electrical switches get the least attention of all the items in any life space. We fit them, and forget about them, while these little buttons bear the brunt of mishandling, each time we want to switch on or turn down any of our electrical appliances.

It is only when they are worn out or broken, that we tend to look at their condition and remember that they are an intrinsic and indispensable part of our lifestyle. Luckily the wise, have never underestimated the power of little things.

Our stunning yet humble switches have a lot going on inside them. The engineering team starts out designing and prototyping the mechanical and structural aspects of the switch before each switch has been assembled with extreme care. Our industrial design team shapes the physical product keeping its aesthetics and user friendliness in mind. Our every switch undergoes shock and vibration handling tests before it reaches you.

IN LOVING MEMORY OF SHRI. ANILKUMAR JAIN

FOUNDER OF CEEJE
1956 - 2020



The world changes from year to year, our lives from day to day, but the love and memory of you shall never pass away.

We always feel your presence as if you never left our side. There's nothing that we value more than your love. No matter where we are or what we're doing, your blessings will always keep us going forward.

As long as we live, you will live. As long as we live, you will be remembered. As long as we live, you will be loved.



CORE VALUE

INTEGRITY

Demonstrating honesty, transparency, and ethical behavior in all business practices is essential. Integrity builds trust with customers and stakeholders.

CUSTOMER-CENTRIC

Placing customers at the center of everything you do. This means prioritizing their needs, providing excellent service, and actively seeking feedback to improve.

ASSURANCE

At Ceeje Progressive Electrical Industries LLP, we value the deep connections we share with our customers. We believe in the power of personal relationships and actively foster partnerships built on trust and mutual understanding. Our approach is centered around continuous engagement, where we not only meet our client's needs but also anticipate their evolving preferences.

QUALITY

Committing to delivering high-quality products or services that meet or exceed customer expectations.

INNOVATION

Encouraging creativity and a forward-thinking mindset. Being open to new ideas and technologies to drive continuous improvement and growth.

COMPASSIONATE

We're compassionate in the workplace which leads to a caring culture that makes our employees feel included and wants to stay with the company. We treat compassion in the workplace with the same importance as any other trait like teamwork and effective communication.

OUR VISION

At Ceeje Progressive Electrical Industries LLP, we envision a manufacturing landscape transformed by innovation, sustainability, and precision. Our mission is to lead this transformation, setting new standards for excellence and efficiency in the industry

OUR MISSION

To provide high-quality products / services that meet our customers' needs and exceed their expectations while fostering a culture of innovation and sustainability.

Content

01

GOLD SERIES

02

MODULAR SERIES

03

PC SERIES

04

GENERAL SERIES

05

NEXIA MCB'S

06

RESIDUAL CURRENT
CIRCUIT BREAKER

07

DISTRIBUTION BOX

08

TECHNICAL DATA



TURNING POSSIBILITIES INTO REALITY



001 002 003



004 005 006

CODE	ITEM	MRP.	MRP.	PKG.
6AMP. SWITCHES 240V.1 MODULE - CRETA		WHITE	GREY	
CR-001	1 Way Switch	38.00	49.00	20
CR-002	2 Way Switch	59.00	71.00	20
CR-003	Bell Push Switch	59.00	71.00	20
16AMP. SWITCHES 240V.1 MODULE - CRETA				
CR-004	1 Way Switch	80.00	89.00	20
CR-005	2 Way Switch	115.00	123.00	20
CR-006	1 Way Switch with Ind.	119.00	127.00	20



001 002 003



009 010 011



012 014 007 008A



PP1 PP2 PP3



PP5 PP6 PP7



017 018 019



020 020/A



021 022 023 024

CODE	ITEM	MRP.	MRP.	PKG.
6AMP. SWITCHES 240V.1 MODULE - GOLD		WHITE	GREY	
001	1 Way Switch	38.00	49.00	20
002	2 Way Switch	59.00	71.00	20
003	Bell Push Switch	59.00	71.00	20
16AMP. SWITCHES 240V.1 MODULE				
009	1 Way Switch	80.00	89.00	20
010	2 Way Switch	115.00	123.00	20
011	1 Way Switch with Ind.	119.00	127.00	20
6 & 16 AMP. SWITCHES 240V.2 MODULE				
007	Bell Push Switch	95.00	110.00	10
008A	Bell Push Switch with Ind.	98.00	113.00	10
012	16A 1 Way Switch	115.00	135.00	10
014	16A 1 Way Switch with Ind.	135.00	156.00	10
016	32A D.P. Switch	180.00	220.00	10
6AMP. SWITCHES 240V. 1M - PLATINA				
PP1	1 Way Switch	32.00	40.00	20
PP2	2 Way Switch	52.00	62.00	20
PP3	Bell Push	52.00	62.00	20
16 AMP. SWITCHES 240V. 1M - PLATINA				
PP5	1 Way Switch	83.00	93.00	20
PP6	2 Way Switch	106.00	113.00	20
PP7	1 Way Switch with Ind.	117.00	125.00	20
SOCKETS 240V. 6A & 16A				
017	6A. 2 Pin Socket 1M	65.00	74.00	20
018	6A. 2 In 1 Socket 2M	78.00	99.00	10
019	Multi socket 6,10 & 13A International Socket	160.00	185.00	10
020	6/16A. Uni So. with Sutter	185.00	195.00	10
020/A	6/16A. Uni Socket without Sutter	160.00	185.00	10
DIMMER & STEP FAN REG. 250V. 50-60 Hz				
021	Mini Dimmer 1M	225.00	260.00	10
022	Medium Dimmer 2M	250.00	290.00	10
023	Mini 4 Step EME Reg. 1M(Full Rotary)	315.00	365.00	10
024	Medium 5 Step EME Reg. 2M(Full Rotary)	335.00	415.00	10



CODE	ITEM	MRP.	MRP.	PKG.
SUPPORTING ACCESSORIES		WHITE	GREY	
025	Indicator 1M	75.00	88.00	20
026	Blank Plate 1M	21.00	37.00	50
027	Mini T.V. 1M	85.00	100.00	20
027/A	10A. Kit Kat Fuse 1M	180.00	200.00	10
027/B	1 MUSB Socket(2A)	450.00	490.00	10
16AMP. SWITCHES 240V.1 MODULE		WH	GREY	
028	Electronic Buzzer 2M	220.00	240.00	5
029	Rj 11 2 Line Te Jack	90.00	110.00	20
030	Rj 45 Modem jack 1M	400.00	425.00	10
031	Step Maker with 6Led 2M	500.00	540.00	5
LIGHT FITTING				
032	Foot Lite 2M(3LED)	317.00	355.00	5
033/A	Foot Lite 4M Platina Plate	710.00	820.00	5
SINGLE POLE MCB 1M				
033	S.P.M.C.B.6A.	220.00	290.00	10
034	S.P.M.C.B.10A.	220.00	290.00	10
035	S.P.M.C.B.16A.	220.00	290.00	10
036	S.P.M.C.B.20A.	220.00	290.00	10
037	S.P.M.C.B.25A.	220.00	290.00	10
033	S.P.M.C.B.32A.	220.00	290.00	10
DOUBLE POLE MCB 2M				
039	D.P.M.C.B.6A.	425.00	525.00	10
040	D.P.M.C.B.10A.	425.00	525.00	10
041	D.P.M.C.B.16A.	425.00	525.00	10
042	D.P.M.C.B.20A.	425.00	525.00	10
043	D.P.M.C.B.25A.	425.00	525.00	10
044	D.P.M.C.B.32A.	425.00	525.00	10
MOTOR STARTER 2M				
046	Motor Starter 25A.	410.00	510.00	10
32A. D.P. WITH KEY TAG				
047	D.P. Switch with Key Tag	480.00	510.00	10
048	Only Key Tag	90.00	115.00	100

KLASS

KLASS SERIES COVER PLATES (GLASS PLATES)



BRONZE

COPPER

FROSTED WHITE

MODULE	2M	3M	4M	6M	8M V.	8M H.	12M	18M
CODE	K-62	K-63	K-64	K-65	K-66	K-67	K-68	K-69
PLATES	MRP. Rs	MRP. Rs	MRP. Rs	MRP. Rs	MRP. Rs	MRP. Rs	MRP. Rs	MRP. Rs
SOLID COLOURS	510.00	669.00	905.00	1406.00	1595.00	1595.00	1873.00	2403.00
MIRROR FINISH	555.00	716.00	975.00	1476.00	1666.00	1666.00	1907.00	2449.00
BASE PLATE ONLY	50.00	65.00	72.00	112.00	140.00	140.00	175.00	250.00
PKG. FOR GLASS	10	10	10	10	5	5	5	5
PKG. FOR BASE	20	20	20	20	10	10	10	10
SIZE (mm) APROX.	92X87	125X87	153X87	224X87	155X155	268X87	268X87	225X225

***Glass Plate prices are excluding Base Plates**

GOLD COVER PLATES WITH BASE



GOLD

MODULE	1M	2M	3M	4M	6M	8M V.	8M H.	12M	18M
CODE	61	62	63	64	65	66	67	68	69
PLATES	MRP. Rs	MRP. Rs	MRP. Rs	MRP. Rs	MRP. Rs	MRP. Rs	MRP. Rs	MRP. Rs	MRP. Rs
ECO WHITE	75.00	75.00	99.00	108.00	150.00	195.00	172.00	230.00	315.00
BLACK	123.00	123.00	156.00	185.00	225.00	305.00	302.00	388.00	520.00
DARK WOOD	123.00	123.00	156.00	185.00	225.00	305.00	302.00	388.00	520.00
PKG.	10	10	10	10	10	5	10	5	5
SIZE (mm) APROX.	92X87	92X87	125X87	153X87	224X87	155X155	268X87	268X87	225X225

NEXIA COVER PLATES WITH BASE

NEXIA



MODULE	1M	2M	3M	4M	6M	8M H.	8M SQ.	12M	18M
CODE	N-71	N-72	N-73	N-74	N-75	N-76	N-77	N-78	N-79
PLATES	MRP. Rs	MRP. Rs	MRP. Rs	MRP. Rs	MRP. Rs	MRP. Rs	MRP. Rs	MRP. Rs	MRP. Rs
WHITE	96.00	96.00	117.00	136.00	188.00	228.00	228.00	318.00	420.00
GREY	125.00	125.00	160.00	190.00	260.00	307.00	310.00	392.00	525.00
PKG.	10	10	10	10	10	10	5	5	5
SIZE (mm) APROX.	92X87	92X87	125X87	153X87	224X87	268X87	155X155	220X155	225X225



AURA

HEXA RED





GLOBE

SUMO

ROCKER

SLEEK

GAMA

OVAL

VISTA



V-001



V-002



V-003



V-004



V-005



V-006



V-007



V-008



V-009



V-010



OL-001



OL-002



OL-003



OL-004



OL-005



OL-006

CODE	ITEM	MRP.	MRP.	PKG.
6A 240 V. SWITCH - VISTA SERIES		WHITE	BLACK	
V-001	1 Way Switch	36.00	43.00	20
V-002	2 Way Switch	72.00	77.00	20
V-003	Bell Push Switch	72.00	77.00	20
16A 240 V. SWITCH - VISTA SERIES				
V-004	1 Way Switch	73.00	80.00	20
V-005	1 Way Switch with Ind.	91.00	98.00	20
V-006	2 Way Switch	91.00	98.00	20
6 & 16A 240 V. SWITCH - VISTA SERIES(2M)				
V-007	6A Bell Push with Ind. (2M)	110.00	118.00	10
V-008	16 A 1 Way Switch with Ind. (2M)	118.00	126.00	10
V-009	16 A 2 Way Switch with Ind. (2M)	150.00	158.00	10
V-010	32 A D.P. Switch with Ind. (2M)	195.00	203.00	10
6A 240 V. SWITCH - OVAL SERIES				
OL-001	1 Way Switch	36.00	43.00	20
OL-002	2 Way Switch	72.00	77.00	20
OL-003	Bell Push Switch	72.00	77.00	20
16A 240 V. SWITCH - OVAL SERIES				
OL-004	1 Way Switch	73.00	80.00	20
OL-005	1 Way Switch with Ind.	91.00	98.00	20
OL-006	2 Way Switch	91.00	98.00	20

CODE	ITEM	MRP.	MRP.	PKG.
6A 240 V. SWITCH - SLEEK SERIES				
SL-001	6A.1 Way Switch	51.00	55.00	20
SL-002	6A. 2 Way Switch	100.00	104.00	20
SL-003	6A. Bell Push Switch	100.00	104.00	20
		WHITE	BLACK	
16A 240 V. SWITCH - SLEEK SERIES				
SL-004	16A. 1 Way Switch	103.00	107.00	20
SL-005	16A. 2 Way Switch	118.00	122.00	20
SL-006	16A. 1 Way Switch with Ind	118.00	122.00	20
6A 240 V. SWITCH - GLOBE SERIES				
GL-001	6A.1 Way Switch (1 Pair)	96.00	106.00	20
GL-002	6A.2 Way Switch (1 Pair)	150.00	160.00	20
GL-003	16A.1Way Switch (1 Pair)	150.00	160.00	20
16A 240 V. SWITCH - GLOBE SERIES				
GL-004	16A.1Way Switch with Ind. (2M)	150.00	160.00	20
GL-005	6A.Bell Push with Ind. (2M)	150.00	160.00	20
GL-006	32A. D.P Switch with Ind. (2M)	260.00	275.00	20
6A 240 V. SWITCH - SUMO SERIES				
S-001	1 Way Switch	36.00	43.00	20
S-002	2 Way Switch	72.00	77.00	20
S-003	Bell Push Switch	72.00	77.00	20
16A 240 V. SWITCH - SUMO SERIES				
S-004	1 Way Switch	73.00	80.00	20
S-005	1 Way Switch with Ind.	91.00	98.00	20
S-006	2 Way Switch	91.00	98.00	20
6A 240 V. AC SWITCH - GAMA SERIES				
T-001	1 Way Switch	36.00	43.00	20
T-002	2 Way Switch	72.00	77.00	20
T-003	Bell Push Switch	72.00	77.00	20
16 AMP. SWITCHES 240V. GAMA SERIES				
T-004	1 Way Switch	73.00	80.00	20
T-005	1 Way Switch with Ind.	91.00	98.00	20
T-006	2 Way Switch	91.00	98.00	20
T-007	32A. DP Switch with Ind.	189.00	199.00	10
T-010	6A Bell Push M-2	97.00	105.00	10
T-011	6A Bell Push with Ind. M-2	107.00	115.00	10
T-012	16A. 1 Way Switch M-2	110.00	122.00	10
T-013	16A.1 Way Switch with Ind. M-2	115.00	124.00	10
T-014	16A. 2 Way Switch M-2	147.00	157.00	10
T-015	16A.1 Way Switch Wh Porcelain Base	76.00	82.00	20
T-016	16A.2 Way Switch Wh Porcelain Base	93.00	99.00	20
T-017	16A. Way Switch with Ind. Wh Porcelain Base	93.00	99.00	20



CODE	ITEM	MRP.	MRP.	PKG.
6A 240 V. SWITCH G - 002		WHITE	BLACK	
G-002	1 Way Switch	34.00	41.00	20
G-004	2 Way Switch	65.00	71.00	20
G-005	Bell Push Switch	65.00	71.00	20
6A 240 V. SWITCH - ROCKER SERIES				
RT-001	1 Way Switch	31.50	37.50	20
RT-003	2 Way Switch	62.00	68.00	20
RT-004	Bell Push Switch	62.00	68.00	20
16AMP. 240 V. AC SWITCH				
019A	1 Way Switch	66.00	72.00	20
020A	1 Way Switch with Ind.	84.00	90.00	20
021A	2 Way Switch	84.00	90.00	20
021B	16A. 1 Way Switch Wh Porcelain Base	76.00	82.00	20
021C	16A. 2 Way Switch Wh Porcelain Base	93.00	99.00	20
021D	16A. Switch Ind. Wh Porcelain Base	93.00	99.00	20
6AMP. SWITCH 240 V. 2 MODULE				
017	Bell Push	89.00	98.00	10
018	Bell Push with Ind.	92.00	101.00	10
16A. SWITCH & 32 A. D.P. SWITCH 240V. 2M				
022	1 Way Switch	104.00	112.00	10
023	1 Way Switch with Ind.	117.00	125.00	10
024	2 Way Switch	136.00	145.00	10
026	32 A. D.P. Switch with Ind.	184.00	192.00	10
SOCKETS 6A. 240V.				
027	2 Pin Socket	49.00	55.00	20
030	Multi Socket(Charger Socket)	126.00	135.00	10
G010	2-in-socket G-10	57.00	65.00	10
G011	6A 3 Pin Socket (ISI)	57.00	65.00	10
G012	6A 3 Pin Socket with Shutter (ISI)	67.00	75.00	10
DIMMER / REGULATOR				
031	M-1 Dimmer	215.00	221.00	10
033	4 Step Dimmer(Full Rotary 1M)	275.00	281.00	10
034	5 Step Dimmer(Full Rotary 2M)	285.00	293.00	10
031A	GAMA M-1 Dimmer	218.00	224.00	10
033B	GAMA 4 Step Dimmer(Full Rotary 1M)	279.00	285.00	10
034C	GAMA 5 Step Dimmer(Full Rotary 2M)	289.00	294.00	10
POWER SOCKET WITH HIGH HEAT RESISTANCE BASE				
036	6 X 16A. Twin Socket Heavy Duty with Shutter	128.00	137.00	10
036A	6 X 16A. Socket without Shutter	119.00	128.00	10
037	Multi Socket For All Pin 6/10/13A.	144.00	153.00	10
037A	6 X 16A. Universal Socket Wh. Porcelain base	130.00	137.00	10



G-002 G-004 G-005



RT-001 RT-003 RT-004



019A 020A 021A 021B



017 018



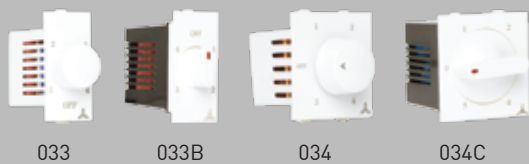
022 026



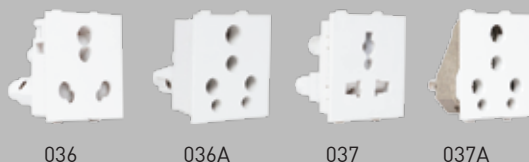
027 030 G-010 G-011



G-012



033 033B 034 034C



036 036A 037 037A

CODE	ITEM	MRP.	MRP.	PKG.
32A D.P. SWITCH WITH KEY TAG/MOTOR STARTER SWITCH SINGLE PHASE		WHITE	BLACK	
042	25A. Starter Switch(5HP)	390.00	400.00	10
043	32 D.P. Mains On Off With Key	450.00	500.00	10
044	Only Key Tag with Key Ring	67.00	80.00	100
BUZZER / FOOT LIGHT 2 & 4 MODULE				
077	Buzzer 220V / 250V M-2	205.00	213.00	10
045	Foot Light 4M(LED)	410.00	430.00	5
045B	2M Foot Light(LED)	207.00	217.00	10
AUFL-01	AURA 3 & 4M FOOT LIGHT *	200.00	237.00	10
HXFL-01	HEXA 4M FOOT LIGHT *	200.00	237.00	10
* COLOURS AVAILABLE CW. WW. R.G.B. PK				
T.V. SOCKET / TEL. JACK / MODEM JACK				
RT-050	T.V. Socket Single Outlet	82.00	90.00	20
RT-051	M-1 Telephone Jack	82.00	90.00	20
RT-054	Rj Modem J. for Comp with Shutter	340.00	355.00	10
RT-055	1MUSB Socket (2A)	385.00	391.00	10
RT-055A	1MUSB Type A & C	595.00	601.00	10
SUPPORT MODULE				
057	Fuse Unit for 16 or 10A	121.00	131.00	10
058	Neon Indicator Lamp	54.00	60.00	20
059	Oval Neon Indicator with Brass Terminal	64.00	70.00	20
061	Blank Plate M-1	16.00	21.00	60
SINGLE POLE MCB				
C063	6A. S.P.M.C.B	182.00	203.00	10
C064	10A. S.P.M.C.B	182.00	203.00	10
C065	16A. S.P.M.C.B	182.00	203.00	10
C066	20A. S.P.M.C.B	182.00	203.00	10
C067	25A. S.P.M.C.B	182.00	203.00	10
C068	32A. S.P.M.C.B	182.00	203.00	10
DOUBLE POLE MCB				
C069	6A. D.P.M.C.B	423.00	455.00	5
C070	10A. D.P.M.C.B	423.00	455.00	5
C071	16A. D.P.M.C.B	423.00	455.00	5
C072	20A. D.P.M.C.B	423.00	455.00	5
C073	25A. D.P.M.C.B	423.00	455.00	5
C074	32A. D.P.M.C.B	423.00	455.00	5



042



043



044



045B



045



HXFL-01



AUFL-01



RT-050



RT-051



RT-055



RT-055A



057



058



059



061



C063-68



C069-70



Drive
Deep
into
Comfort

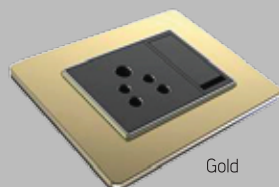
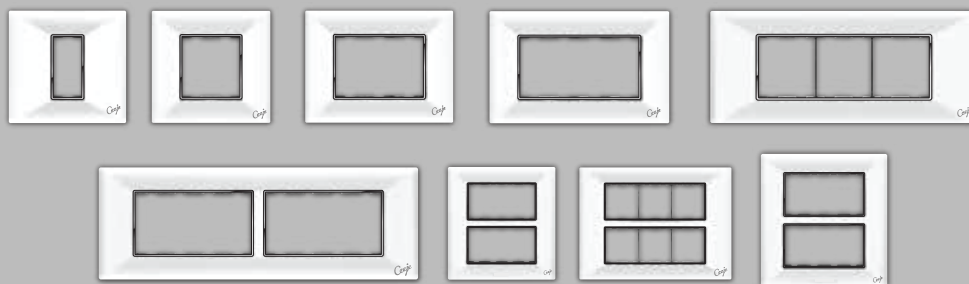
HEXA WOODY MODULAR PLATES



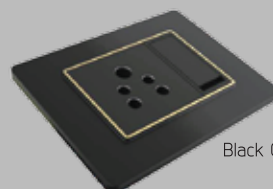
MODULE	1M	2M	3M	4M	6M	8H	10M	12V	12H	16M	18V	18H	20M
CODE	HX-01	HX-02	HX-03	HX-04	HX-05	HX-06	HX-07	HX-08	HX-09	HX-10	HX-11	HX-11A	HX-12
PLATES	MRP. Rs	MRP. Rs	MRP. Rs	MRP. Rs	MRP. Rs	MRP. Rs	MRP. Rs	MRP. Rs	MRP. Rs	MRP. Rs	MRP. Rs	MRP. Rs	MRP. Rs
WHITE WITH SILVER CHR	80.00	80.00	90.00	115.00	131.00	161.00	185.00	201.00	235.00	265.00	340.00	340.00	385.00
METALLIC	104.00	104.00	117.00	150.00	171.00	210.00	241.00	262.00	306.00	345.00	442.00	442.00	500.00
TEXTURE/WOOD	144.00	144.00	150.00	192.00	241.00	296.00	342.00	370.00	402.00	440.00	580.00	580.00	587.00
PKG.	10	10	10	10	10	10	10	10	10	10	5	5	5
SIZE (mm) APROX.	4X4	4X4	4X4	6X4	8X4	10X4	12X4	6X8	15X4	10X7	10X8	8X10	12X8

QUBE COVER PLATES

MODULE	1M	2M	3M	4M	6M	8H	8V	12M	16M	18M
CODE	AU-1	AU-2	AU-3	AU-4	AU-5	AU-6	AU-7	AU-8	AU-10	AU-9
PLATES	MRP. Rs	MRP. Rs	MRP. Rs	MRP. Rs	MRP. Rs	MRP. Rs	MRP. Rs	MRP. Rs	MRP. Rs	MRP. Rs
WHITE	65.00	65.00	82.00	95.00	130.00	163.00	163.00	200.00	230.00	275.00
WHITE WITH SILVER LINE	70.00	70.00	90.00	98.00	155.00	202.00	202.00	235.00	260.00	296.00
FOREST WOOD & GOLD	102.00	102.00	112.00	150.00	215.00	250.00	260.00	335.00	425.00	557.00
PKG.	10	10	10	10	10	10	5	10	5	5



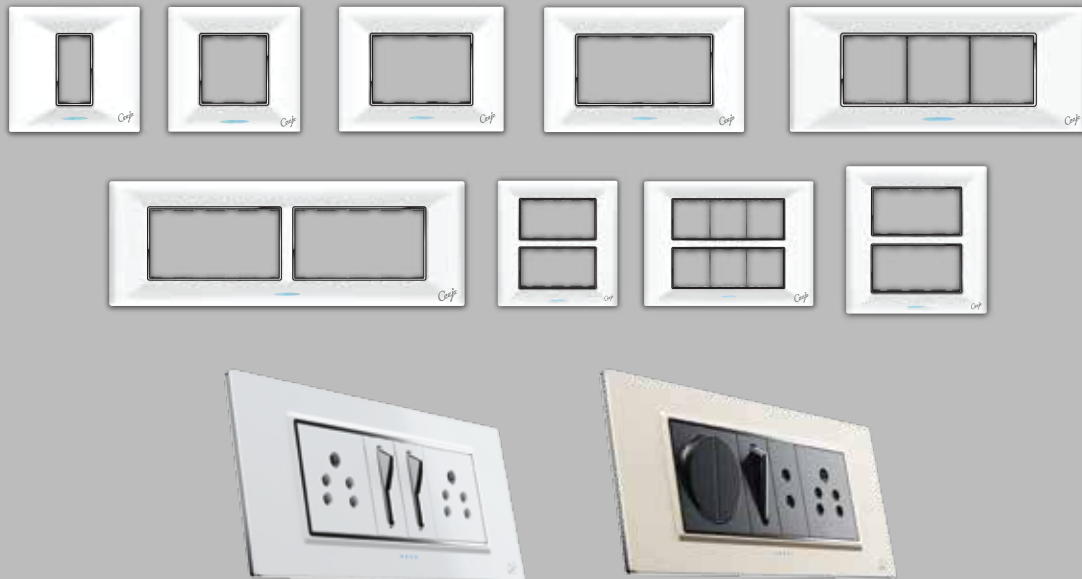
Gold



Black Gold

AURA DOUBLE MOUNTING PLATES

MODULE	1M	2M	3M	4M	6M	8H	8V	12M	18M
CODE	AU-1	AU-2	AU-3	AU-4	AU-5	AU-6	AU-7	AU-8	AU-9
PLATES	MRP. Rs	MRP. Rs	MRP. Rs	MRP. Rs	MRP. Rs	MRP. Rs	MRP. Rs	MRP. Rs	MRP. Rs
WHITE & ICE BLUE	72.00	72.00	95.00	99.00	161.00	213.00	213.00	245.00	305.00
FOREST WOOD & GOLD	105.00	105.00	112.00	150.00	220.00	250.00	265.00	342.00	587.00
PKG.	10	10	10	10	10	10	5	10	5



CEEJE DOUBLE MOUNTING PLATE (A&S)

MODULE	1M	2M	3M	4M	6M	8MH	8MV	12M	16M	18M
CODE	61-T1	61-T2	61-T3	AU-4	61-T6	61-T88	61-T8	61-T12	61-T16	61-T18
PLATES	MRP. Rs	MRP. Rs	MRP. Rs	MRP. Rs	MRP. Rs	MRP. Rs	MRP. Rs	MRP. Rs	MRP. Rs	MRP. Rs
WHITE FINISH	59.00	59.00	80.00	87.00	126.00	159.00	171.00	192.00	226.00	268.00
D WOOD / BLACK	98.00	98.00	107.00	139.00	206.00	236.00	249.00	322.00	361.00	556.00
PKG.	10	10	10	10	10	10	5	10	5	5



CEEJE DOUBLE MOUNTING PLATE (A & S)

MODULAR WOODY PLATES



MODULAR WOODY PLATES

DARK WOOD

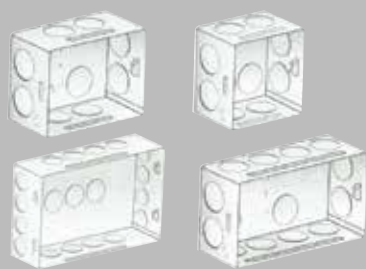
MODULE	1M	2M	3M	4M	6M	8H	10M	12V	12H	16M	18M	20M
CODE	C101	C102	C103	C104	C105	C106	C107	C108	C109	C110	C111	C112
PLATES	MRP. Rs	MRP. Rs	MRP. Rs	MRP. Rs	MRP. Rs	MRP. Rs	MRP. Rs	MRP. Rs	MRP. Rs	MRP. Rs	MRP. Rs	MRP. Rs
WHITE IVORY	63.00	63.00	76.00	98.00	106.00	121.00	150.00	163.00	204.00	230.00	283.00	322.00
METALLIC	136.00	136.00	142.00	177.00	211.00	257.00	289.00	315.00	385.00	378.00	600.00	602.00
SILVER LINE	71.00	71.00	87.00	114.00	121.00	143.00	177.00	197.00	239.00	266.00	354.00	390.00
PKG.	10	10	10	10	10	10	10	10	10	10	5	10
SIZE (mm) APPROX.	4X4	4X4	4X4	6X4	8X4	10X4	12X4	6X8	15X4	10X7	10X8	12X8

NEW ULTRA / DOUBLE MOUNTING PLATES

MODULE	1M	2M	3M	4M	6M	8MH	8MV	12M	16M	18M
CODE	61-U1	61-U2	61-U3	61-U4	61-U6	61-U88	61-U8	61-U12	61-U16	61-U18
PLATES	MRP. Rs	MRP. Rs	MRP. Rs	MRP. Rs	MRP. Rs	MRP. Rs	MRP. Rs	MRP. Rs	MRP. Rs	MRP. Rs
SILVER LINE	66.00	66.00	89.00	92.00	151.00	199.00	199.00	231.00	252.00	289.00
BLACK LINE	59.00	59.00	80.00	87.00	126.00	159.00	171.00	192.00	215.00	268.00
D WOOD & METALLIC	98.00	98.00	107.00	139.00	206.00	236.00	249.00	322.00	375.00	556.00
PKG.	10	10	10	10	10	10	5	10	5	5

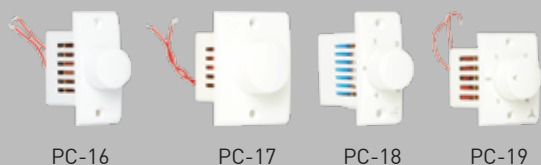
METALLIC COLOURS AVAILABLE: BLACK GOLD/MATT BLACK/VELVET RED/ PEARL GREEN





CODE	ITEM	MRP.	PKG.	
METAL BOXES				
59-MB1/2	1/2 Module	84.00	10	
59-MB 3	3 Module	98.00	10	
59-MB 4	4 Module	119.00	10	
59-MB 6	6 Module	159.00	5	
59-MB 88	8 Module H	206.00	5	
59-MB 8	8 Module V	206.00	5	
59-MB12	12 Module	245.00	5	
59-MB 18	18 Module	350.00	5	
HEXA SURFACE BOX				
HX - SF 1/2	1/2 Module	69.00	20	
HX - SF 3	3 Module	80.00	10	
HX - SF 4	4 Module	92.00	10	
HX - SF 6	6 Module	109.00	10	
HX - SF 88	8 Module H	145.00	10	
HX - SF 8	8 Module V	145.00	10	
HX - SF 12	12 Module	171.00	10	
HX - SF 16	16 Module	222.00	5	
HX - SF 18	18 Module	280.00	5	
SURFACE BOXES				
59-SB1/2	1/2 Module	46.00	10	
59-SB 3	3 Module	58.00	10	
59-SB 4	4 Module	67.00	10	
59-SB 6	6 Module	105.00	5	
59-SB 88	8 Module H	131.00	5	
59-SB 8	8 Module V	140.00	5	
59-SB12	12 Module	175.00	5	
59-SB 18	18 Module	270.00	5	
ECO MODULAR SURFACE GANG BOXES				
		SILVER LINE	WHITE	
16-SGB 1	1 Module	51.00	47.00	20
16-SGB 2	2 Module	61.00	57.00	20
16-SGB 3	3 Module	91.00	83.00	20
16-SGB 4	4 Module	104.00	96.00	10
16-SGB 6	6 Module	124.00	112.00	10
16-SGB 88	8 Module H	144.00	131.00	10
16-SGB 8	8 Module V	149.00	135.00	5
16-SGB 9	9 Module	N/A	159.00	10
16-SGB 12	12 Module	187.00	162.00	5
16-SGB 16	16 Module	224.00	190.00	5
16-SGB 18	18 Module	241.00	205.00	5
METAL BOXES				
AC-025	AC Box Unit with 25 A Socket. 25A MCB & 25A Plug Top	840.00	1	

CODE	ITEM	MRP.	PKG.
6A SWITCH PC			
PC-1	1 Way Switch	23.00	20
PC-2	2 Way Switch	34.00	20
PC-3	Bell Push	34.00	20
6A DELUXE SWITCH			
PC-4	1 Way Switch	23.00	20
PC-5	2 Way Switch	34.00	20
PC-6	Bell Push Switch	34.00	20
6A ANGEL SWITCH			
PC-7	1 Way Switch	23.00	20
PC-8	2 Way Switch	34.00	20
PC-9	Bell Push	34.00	20
6A SOCKETS / INDICATOR			
PC-10	2 in One Socket	44.00	10
PC-10A	6A 3 Pin Socket	44.00	10
PC-11	2 Pin Socket	40.00	20
PC-12	Indicator	40.00	20
KITKAT FUSE / T.V. ANTENNA / TEL. JACK			
PC-13	10A. Kit Kat Fuse	88.00	10
PC-14	T.V. Antenna soc. (Mini)	73.00	20
PC-15	Tel. Jack (Mini)	93.00	20
DIMMERS / REGULATORS			
PC-16	Mini Dimmer	180.00	10
PC-17	Med. Dimmer	205.00	10
PC-18	Mini 4 Step Fan Reg. (Full Rotary)	255.00	10
PC-19	Med. 5 Step Fan Reg. (Full Rotary)	267.00	10
16 A SWITCH / SOCKETS			
PC-20	16A. 1 Way Switch	106.00	10
PC-21	16A. 2 Way Switch	136.00	10
PC-22	6&16A. Uni. Socket	121.00	10
16 A SWITCH / 6 & 16A. SOCKET WITH J BOX			
PC-23	16A. Switch with J. Box	144.00	10
PC-24	Uni. Socket with J. Box	153.00	10
6 & 16A. S.S. COMBINED / S.S. COM. WITH J. BOX			
PC-25	6 & 16A. S.S.C.	181.00	5
PC-26	6 & 16A. S.S.C. with J. Box	224.00	5





PC-27



PC-28



PC-30



PC-31



P-27

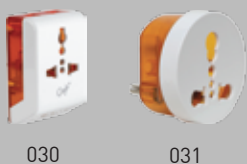
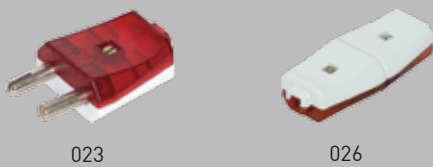


P-28

CODE	ITEM	MRP.	PKG.
5 IN ONE / 5 IN ONE WITH J. BOX			
PC-27	5 In 1	278.00	5
PC-28	5 In 1 with J. Box	367.00	5
32.A DOUBLE POLE SWITCH			
PC-29	32A. Mini D.P. Switch	216.00	10
PC-30	D.P. Switch Surface Type	229.00	5
PC-31	D.P. Switch Flush Type	229.00	5
P-27	6A. Double S.S. Combined(with Junction Box)	225.00	10
P-28	16A. Double S.S. Combined(with Junction Box)	430.00	5



CODE	ITEM	MRP.	PKG.
PC LAMP HOLDER (ORANGE) & FANCY LAMP HOLDER			
001	Angle Holder	49.00	20
002	Batten Holder	49.00	20
003	Angle Holder	49.00	20
004	Batten Holder	49.00	20
NEXON LAMP HOLDER			
004A	Angle Holder	50.00	20
004B	Batten Holder	50.00	20
PRIDE LAMP HOLDER / PENDANT HOLDER			
005	Angle Holder Alu. Ring	38.00	20
006	Batten Holder Alu. Ring	38.00	20
007	Pendant Holder Alu. Ring	37.00	20
GOLD LAMP HOLDER / CEILING ROSE			
008	Angle Holder	75.00	10
009	Batten Holder	75.00	10
010	Ceiling Rose	58.00	20
CEILING ROSE			
011	Fancy Ceiling Rose	42.00	20
013	P.C. Ceiling Rose	33.00	20
3 PIN PLUG TOPS			
015	25A Top for AC	123.00	20
016	Power 6A. 3 Pin Top	61.00	20
017	Power 16A. 3 Pin Top	95.00	20
018	Gold 6A. 3 Pin Top	66.00	20
019	Gold 16A. 3 Pin Top	98.00	20
2 PIN TOPS & MALE-FEMALE			
023	Fancy 2 Pin Top	19.00	40
026	Fancy Male Female	36.00	20
6A MULTI PLUG			
027	3 Pin M. Plug (Un.)	66.00	20
028	2 Pin M. Plug (Un.)	44.00	30
029	Posh Multi Plug	78.00	10
030	3 Pin Ultra M. Plug	80.00	10
031	Max 6 to 16 A Conversion Plug	88.00	10





CODE	ITEM	MRP.	PKG.
ADOPTER & HOLDER			
032	Multi Pendant Holder (PC)	37.00	20
033	Prime Adopter (PC)	25.00	20
034	Adopter (UREA)	42.00	20
6A INDUSTRIAL GONG BELL			
035	Gong Bell 75 MM(3")	960.00	5
036	Gong Bell 100 MM(4")	1344.00	1
037	Gong Bell 150 MM(6")	1626.00	1
038	Gong Bell 225 MM(9")	3048.00	1
039	Gong Bell 300 MM(12")	3840.00	1
DING DONG BELL			
040	Ding Dong Bell King	225.00	10
041	Ding Dong Bell Nexia	240.00	10
042	Ding Dong Bell Ultra	230.00	10
043	Gayatri Mantra Musical Bell	360.00	10
FLEX BOX			
044	Opal 4 Meter / 2 Pin	375.00	5
045	Opal 8 Meter / 2 Pin	455.00	5
046	Opal 4 Meter / 3 Pin	455.00	5
047	Fancy 4 Meter / 2 Pin	370.00	5
048	Fancy 8 Meter / 2 Pin	450.00	5
049	Fancy 4 Meter / 3 Pin	450.00	5
049A	Ultra Flex Box 4 Meter / 2 Pin	470.00	5
BOX TYPE SWITCH / BED SWITCH / BOX TYPE SS COMBINED			
050	1 Way Switch	54.00	10
051	Bell Push	60.00	10
052	Bed Switch	48.00	20
053	Hanging Bell Switch	58.00	20
054	6A. Box Type S.S.C.	100.00	10
CEILING PLATE / FAN PLATE			
055	Fancy Ceiling Plate 4" Approx	12.00	100
056	Fancy Fan Plate 7" Approx	26.00	50
057	Deluxe Ceiling Plate 4" Approx	13.00	100
058	Deluxe Fan Plate 7" Approx	38.00	50
059	Gold Fan Plate 7" Approx	58.00	25
060	Deluxe Ceiling Plate 5" Approx	21.00	50
6 & 16 A J. BOX - DELUXE			
061	16A. Switch & Soc. Deluxe	40.00	30
063	6 & 16A. S.S.Com. Deluxe	55.00	20
065	5 In 1 J. Box Deluxe	75.00	15
DECENT PLATE SUITABLE FOR WOODEN BOXES			
067	4.5" X 4.5"	57.00	20
068	4.5" X 7.5"	79.00	10



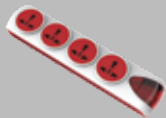
069

070

071



075



086



087

CODE	ITEM	MRP.	PKG.
MCB J. BOX			
069	1/2 MCB J. Box	55.00	20
070	3/4 MCB J. Box	94.00	10
071	5/6 MCB J. Box	164.00	5
CONVERTIBLE GANG BOX			
075	1 Way 0+1	42.00	20
076	2 Way 1+1	50.00	20
077	3 Way 2+1	69.00	10
078	4 Way 3+1	83.00	10
079	5 Way 4+1	89.00	10
080	6 Way 5+1	104.00	10
081	7 Way 6+1	115.00	10
082	8 Way V7+1	130.00	10
083	8 Way H7+1	130.00	10
POWER STRIP			
086	4 Socket 1 Switch Ultra Series	550.00	1
087	Safe Grip PVC Insulated Tape	18.00	30

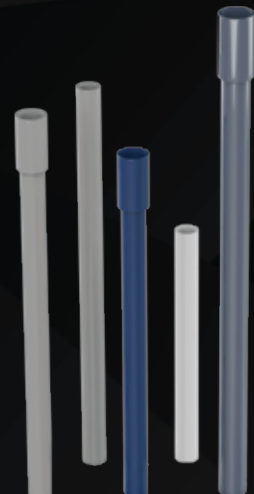


*Things look beautiful only if they are build beautifully.
We ensure our products are fitted with our most safe wires,
MCB's and tough PVC Pipes and fittings.*

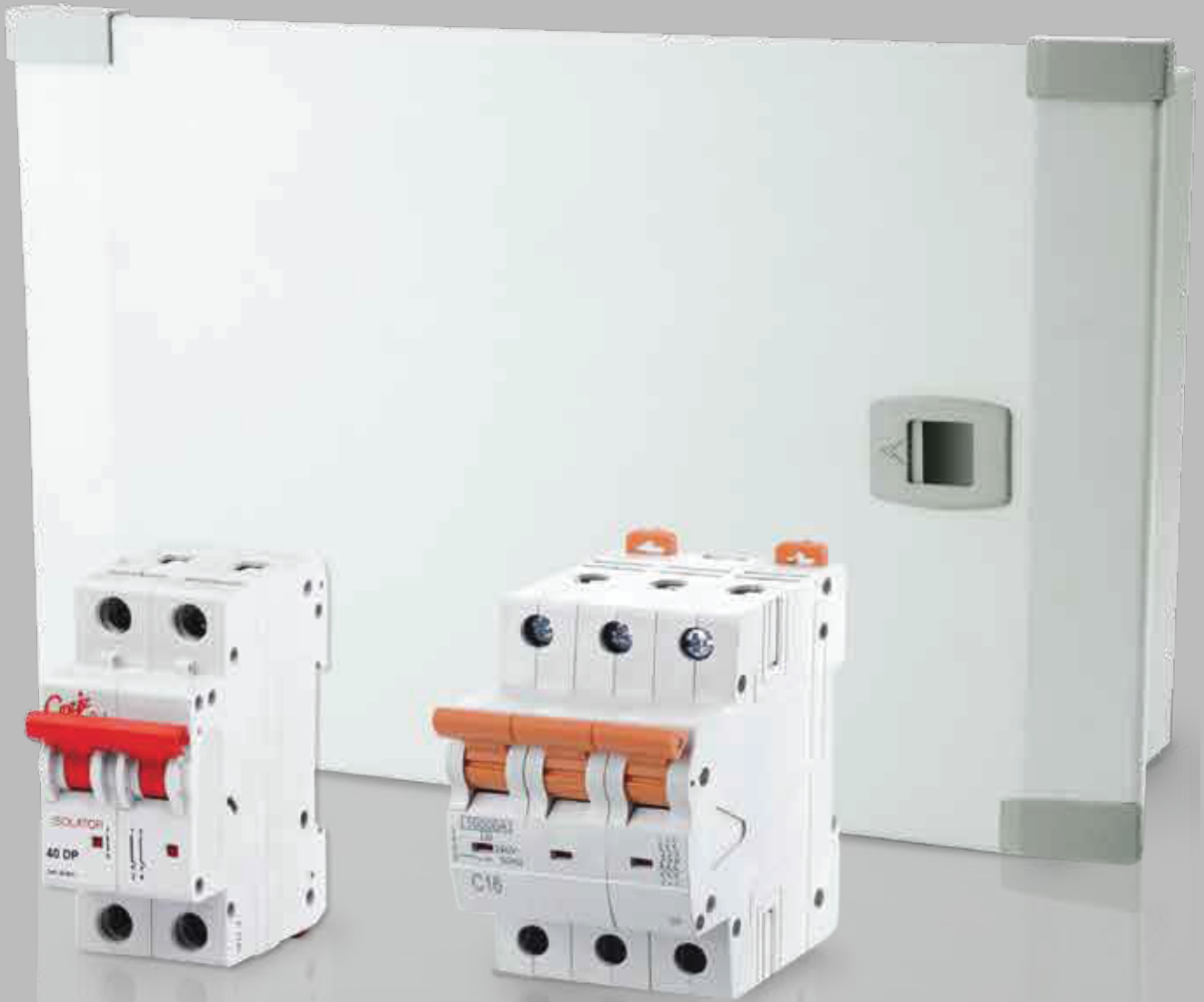
SAFETY MCB & DB'S



WIRES & CABLES



PIPES & FITTINGS



**TECHNOLOGY
THAT STANDS
THE TEST OF TIME.**

Miniature circuit breakers or MCBs offer effective protection through safe Disconnection in the event of an overload and short-circuit. The distinguishing features Of our product range include convenient mounting and connection methods as well as a consistent design.

It provides better safety and can be easily operated.

Our entire range of devices is suitable for all industrial applications. As well as all Applications in non-residential and residential buildings. Thus providing you with the Right device for every application.

Specifications:

- Rated Current Rating-amperes
- Short Circuit Breaking Current Rating-kilo Amperes(Ka)
- Operating Characteristics-b Or C Curves

Constructions & Features:

- In Accordance With IS/IEC 60898-1
- Rated Short Circuit Breaking Capacity : 10000a (10kA)
- High Speed And High Breaking Capacity Mechanism
- Trip Free Mechanism
- No Line-load Bias
- Suitable For Accessory Fitment





CODE	ITEM	MRP.	PKG.
SINGLE POLE (SP) 'C' TYPE			
NX SP 06	MCB 6A SP	145.00	12
NX SP 10	MCB 10A SP	145.00	12
NX SP 16	MCB 16A SP	145.00	12
NX SP 20	MCB 20A SP	145.00	12
NX SP 25	MCB 25A SP	145.00	12
NX SP 32	MCB 32A SP	145.00	12
NX SP 40	MCB 40A SP	234.00	12
NX SP 63	MCB 63A SP	281.00	12

C SERIES MCB (In accordance with Is 8828:1996, ICE 6089:2002)
240/415V, 50Hz, 10KA suitable for motor and other inductive Loads.



DOUBLE POLE (DP) 'C' TYPE			
NX DP 06	MCB 6A DP	434.00	6
NX DP 10	MCB 10A DP	434.00	6
NX DP 16	MCB 16A DP	434.00	6
NX DP 20	MCB 20A DP	434.00	6
NX DP 25	MCB 25A DP	434.00	6
NX DP 32	MCB 32A DP	434.00	6
NX DP 40	MCB 40A DP	551.00	6
NX DP 63	MCB 63A DP	623.00	6

C SERIES MCB (In accordance with Is 8828:1996, ICE 6089:2002)
240/415V, 50Hz, 10KA suitable for motor and other inductive Loads.



TRIPLE POLE (TP) 'C' TYPE			
NX TP 06	MCB 6A TP	670.00	4
NX TP 10	MCB 10A TP	670.00	4
NX TP 16	MCB 16A TP	670.00	4
NX TP 20	MCB 20A TP	670.00	4
NX TP 25	MCB 25A TP	670.00	4
NX TP 32	MCB 32A TP	670.00	4
NX TP 40	MCB 40A TP	811.00	4
NX TP 63	MCB 63A TP	977.00	4

C SERIES MCB (In accordance with Is 8828:1996, ICE 6089:2002)
240/415V, 50Hz, 10KA suitable for motor and other inductive Loads.



FOUR POLE (FP) 'C' TYPE			
NX FP 06	MCB 6A FP	930.00	3
NX FP 10	MCB 10A FP	930.00	3
NX FP 16	MCB 16A FP	930.00	3
NX FP 20	MCB 20A FP	930.00	3
NX FP 25	MCB 25A FP	930.00	3
NX FP 32	MCB 32A FP	930.00	3
NX FP 40	MCB 40A FP	1094.00	3
NX FP 63	MCB 63A FP	1249.00	3

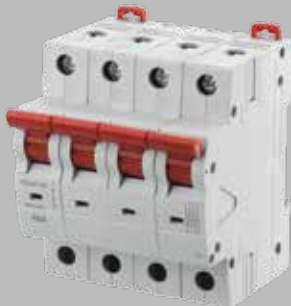
C SERIES MCB (In accordance with Is 8828:1996, ICE 6089:2002)
240/415V, 50Hz, 10KA suitable for motor and other inductive Loads.



	CODE	ITEM	MRP.	PKG.
MCB	TNP 'C' TYPE			
	NX TPN 06	MCB 6A TPN	930.00	3
	NX TPN 10	MCB 10A TPN	930.00	3
	NX TPN 16	MCB 16A TPN	930.00	3
	NX TPN 20	MCB 20A TPN	930.00	3
	NX TPN 25	MCB 25A TPN	930.00	3
	NX TPN 32	MCB 32A TPN	930.00	3
	NX TPN 40	MCB 40A TPN	1094.00	3
	NX TPN 63	MCB 63A TPN	1249.00	3

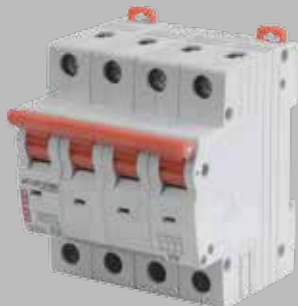


	CODE	ITEM	MRP.	PKG.
ISOLATOR	DOUBLE POLE (DP)			
	NX DP 40	ISO 40A DP	320.00	6
	NX DP 63	ISO 63A DP	351.00	6
	NX DP 100	ISO 100A DP	588.00	6



	CODE	ITEM	MRP.	PKG.
ISOLATOR	FOUR POLE (FP)			
	NX FP 40	ISO 40A FP	611.00	3
	NX FP 63	ISO 63A FP	671.00	3
	NX FP 100	ISO 100A FP	1350.00	3

RESIDUAL CURRENT CIRCUIT BREAKER



CODE	MODEL	MRP.	PKG.
RCCB			
DOUBLE POLE(DP)		30mA Sensivity	
DP042	40 A. D.P. RCCB	1629.00	6
DP043	63 A. D.P. RCCB	1729.00	6
IN ACCORDANCE WITH IS 12640-1:2000& IEC 61008-1 240/415 50Hz WITH 6KA SHORT CIRCUIT WITHSTAND CAPACITY			
FOUR POLE(FP)		30mA Sensivity	
FP054	40 A. F.P. RCCB	2389.00	3
FP055	63 A. F.P. RCCB	2489.00	3
IN ACCORDANCE WITH IS 12640-1:2000& IEC 61008-1 240/415 50Hz WITH 6KA SHORT CIRCUIT WITHSTAND CAPACITY			
DOUBLE POLE(DP) TWO WAY CENTER OFF CHANGEOVER SWITCH			
DP063	40 A.	671.00	6
DP064	63 A.	847.00	6
FOUR POLE(FP) TWO WAY CENTER OFF CHANGEOVER SWITCH			
DP063	40 A.	1200.00	3
DP064	63 A.	1509.00	3

In accordance with IS/IEC 60898-1. 240/415V. AC. 50HZ. 10kA. Suitable for all domestic loads. Motor and other Inductive loads.



CODE	ITEM	MRP.			PKG.
SP & TP & N DOUBLE DOOR DISTRIBUTION BOARDS - ELITE					
4Way	DDS 38	1029.00	DDS 44	2659.00	1
6Way	DDS 39	1229.00	DDS 45	3079.00	1
8Way	DDS 40	1409.00	DDS 46	3529.00	1
10Way	DDS 41	1539.00	-----	-----	1
12Way	DDS 42	1709.00	-----	-----	1
16Way	DDS 43	2089.00	-----	-----	1
SP & TP & N DOUBLE DOOR DISTRIBUTION BOARDS - GOLD LINE					
4Way	DDS 47	869.00	DDS 53	2359.00	1
6Way	DDS 48	989.00	DDS 54	2809.00	1
8Way	DDS 40	1129.00	DDS 55	3249.00	1
10Way	DDS 50	1219.00	-----	-----	1
12Way	DDS 51	1369.00	DDS 56	3999.00	1
16Way	DDS 52	1619.00	-----	-----	1
DISTRIBUTION BOX (WHITE LINE - NX)					
4Way	SD 32	429.00	-----	-----	1
6Way	SD 33	499.00	-----	-----	1
8Way	SD 34	579.00	-----	-----	1
10Way	SD 35	669.00			1
12Way	SD 36	749.00			1
16Way	SD 37	939.00			1

TECHNICAL DATA

MCB CHART

APPLIANCES	CAPACITY / WATT (LOAD) (230VAC 1ph)	Current Rating of MCB	Type of MCB
Air Conditioner	1.0 tones	16 A	C series
	1.5 tones	20 A	C series
	2.0 tones	32 A	C series
Refrigerator	165 litres	3 A	C series
	350 W	4 W	C series
Oven cum Griller	4500 W	25 W	B series
	1750 W	10 W	B series
Oven	750 W	4 W	B series
only	2000 W	10 W	B series
Hot Plate only	1000 W	6 W	B series
Room Heater	2000 W	10 W	B series
	300 W	2 W	C series
Washing Machine	1300 W	6 W	C series
Washing Machine (with heater)	1000 W	6 W	B series
Water Heater (storage/instant)	2000 W	10 W	B series
	3000 W	16 W	B series
	6000 W	32 A	B series
	750 W	4 W	B series
Electric Iron	1250 W	6 W	B series
	1200 W	6 W	B series
Auto Toaster (2 slices)	1500 W	8 W	B series

A GENERAL GUIDE FOR THE SELECTION OF THE MCB'S MCCBS' STARTERS ; SWITCH GEARS ; RELAYS ; HRC FUSES ; CABLES & GLANDS

REF. : IS : 8828, 13947-4-1 & IEC 947-4-1

MOTOR HP	3	0.5	0.75	1	1.5	2	3	5	7.5	10	12.5	15	20	25	30	40	50	60	75	100	125	150	175	200	225
MOTOR KW	415 v., 50 HZ	0.37	0.55	0.75	1.1	1.5	2.25	3.75	5.5	7.5	9.3	11	15	18.5	22	30	37	45	55	75	90	110	130	150	168
LINE CURRENT	AMPS	1	1.3	1.9	2.6	3.7	4.8	7.8	11.2	16	19	21	28	34	40	53	65	78	96	131	156	200	230	275	300
DELTA CONTACTOR	AMPS	12	12	12	12	12	12	16	16	25	25	32	40	40	70	70	110	110	200	200	200	200	300	300	300
RELAY RANGE @ 50 DEG. C	AMPS	0.9	1.4	1.4	2	3	4.5	6	9	14	14	14	20	30	30	45	45	66	66	90	135	135	180	180	180
		1.5	2.3	2.3	3.3	5	7.5	10	15	21	21	23	33	50	50	75	75	110	110	150	225	225	300	300	300
MCB'S & MCCBS' RECOMENDED CURRENT RATING		1A	1.5A	2A	3A	4A	6A	10A	16A	20A	25A	32A	40A	50A	55A	80A	100A	125A	150A	200A	225A	280A	325A	400A	425A
BACKUP HRC FUSE	AMPS	6	6	8	10	10	16	20	32	32	50	50	63	80	80	100	125	160	160	200	250	315	315	400	400
SWITCH	AMPS	32	32	32	32	32	32	32	32	32	50	63	100	100	100	100	125	200	200	200	250	315	315	400	400
CABLE SIZES	Sq. mm	1.5	1.5	1.5	1.5	1.5	1.5	1.5	2.5	2.5	4	6	10	16	16	25	35	50	70	95	150	150	150		
	COPPER INCH	3/4	3/4	3/4	3/4	3/4	3/4	3/4	3/4	3/4	7/8	7/8	1	1 1/8	1 1/8	1 1/4	1 3/8	1 3/8	1 1/2	1 3/4	2	2	2		
	GLAND SIZE (SIEMENS) Sq. mm	2.5	2.5	2.5	2.5	2.5	2.5	2.5	2.5	4	6	10	16	16	25	35	50	70	95	150	185	240	240	300	
ALUMINIUM INCH	3/4	3/4	3/4	3/4	3/4	3/4	3/4	3/4	3/4	7/8	7/8	1	1 1/8	1 1/8	1 1/4	1 3/8	1 3/8	1 1/2	1 3/4	1 3/4	2 1/4	2 3/4	2 3/4	2 3/4	

A GENERAL GUIDE FOR THE SELECTION OF THE MCB'S MCCBS' STARTERS ; SWITCH GEARS ; RELAYS ; HRC FUSES ; CABLES & GLANDS

REF. : IS : 8828, 13947-4-1 & IEC 947-4-1

MOTOR HP	3	-	-	1	1.5	2	3	5	7.5	10	12.5	15	20	25	30	40	50	60	75	100	125	150	175	200	225	
MOTOR KW	415 v., 50 HZ	-	-	0.75	1.1	1.5	2.2	3.7	5.5	7.5	9.3	11	15	18.5	22	30	37	45	55	75	90	110	130	150	168	
LINE CURRENT	AMPS	-	-	1.9	2.6	3.7	4.8	7.8	11.2	16	19	21	28	34	40	53	65	78	96	131	156	200	230	275	300	
PHASER CURRENT	AMPS	-	-	1.04	1.5	2.02	2.8	4.5	6.5	9	11	12	16	20	23	31	37.5	45	55	76	95	115	133	159	173	
LINE / DELTA CONTACTOR	AMPS	-	-	12	12	12	12	12	12	12	12	16	25	25	32	40	40	70	70	110	110	200	200	200	200	
STAR	AMPS	-	-	12	12	12	12	12	12	12	12	16	25	25	32	40	40	70	70	110	110	200	200	200	200	
CONTACTOR	AMPS	-	-	0.9	1.4	1.4	2	3	6	6	9	9	14	14	20	30	30	30	45	66	66	90	90	135	135	
RELAY RANGE @ 50 DEG. C				1.5	2.3	2.3	3.3	5	10	10	15	15	23	23	33	50	50	75	75	110	110	150	150	225	225	
	AMPS			4	6	6	8	16	20	20	32	32	40	50	63	63	80	100	125	160	200	250	250	315	315	
BACKUP HRC FUSE		1A	1.5A	2A	3A	4A	6A	10A	16A	20A	25A	32A	40A	50A	55A	80A	100A	125A	150A	220A	225A	280A	325A	400A	425A	
MCB'S & MCCBS' RECOMENDED CUREENT RATING	AMPS							32	32	32	32	32	32	63	63	63	125	125	125	125	200	200	200	250	315	315
CABLE SIZES	Sq. mm							1.5	1.5	1.5	2.5	2.5	4	6	10	16	16	25	35	50	70	95	150	150	185	
	INCH							3/4	3/4	3/4	3/4	3/4	7/8	7/8	1	1 1/8	1 1/8	1 1/4	1 3/8	1 3/8	1 1/2	1 3/4	2	2	2	
	Sq. mm							2.5	2.5	2.5	2.5	4	6	10	16	16	25	35	50	70	95	150	185	240	240	
COPPER INCH								3/4	3/4	3/4	3/4	7/8	7/8	1	1 1/8	1 1/8	1 1/4	1 3/8	1 3/8	1 1/2	1 3/4	2	2 1/4	2 1/4	2 3/4	
GLAND SIZE (SIEMENS TYPE) Sq. mm								1.5	1.5	1.5	1.5	1.5	2.5	4	6	6	10	16	25	35	50	70	95	95		
ALUMINIUM INCH								5/8	5/8	5/8	5/8	5/8	3/4	3/4	7/8	7/8	1	1 1/8	1 1/8	1 1/8	1 1/4	1 3/8	1 1/2	1 1/2		
GLAND SIZE (SIEMENSTYPE) Sq. mm								2.5	2.5	2.5	2.5	2.5	4	6	6	10	16	25	35	50	70	95	120	120		
COPPER INCH								3/4	3/4	3/4	3/4	3/4	3/4	7/8	7/8	7/8	1 1/8	1 1/8	1 1/8	1 1/4	1 3/8	1 1/2	1 3/4	1 3/4		

*Above rating are recommended rating only. Accurate rating may differ as per type of load

ZERTIFIKAT ♦ CERTIFICATE ♦ CERTIFICADO ♦ CERTIFICATE



Certificate of Registration

This is to certify that

PROGRESSIVE ELECTRICAL INDUSTRIES
 REGISTERED ADDRESS- GALA NO 001,002,003, B WING, KUSHAL MANGAL INDUSTRIAL ESTATE, TUNGARESHWAR PHATA, VASAI EAST, PALGHAR, MAHARASHTRA, 401208, INDIA.

Has been assessed and found to be in per ISO 9001:2015 compliance to the requirement of standard details below.

ISO 9001:2015

(QUALITY MANAGEMENT SYSTEM)

For the FOLLOWING SCOPE OF ACTIVITIES:-
 MANUFACTURING OF ELECTRICAL ACCESSORIES, SWITCHES, WIRES, CABLE & PIPES

This certificate is property of Unitas Certification Services & remains valid subject to satisfactory surveillance audits.

Certificate No:- 1283652 Registration Date:- (20-NOV-2021)
 Surveillance Date:- (20-OCT-2022) Certificate Expiry:- (19-NOV-2024)





The certificate is valid as long as the organization's need unless certification services is requirements. The status of the certificate may be checked at www.unitascertificationservices.co.uk

UNITAS CERTIFICATION SERVICES

Head Office : 14 Riverside Drive, Letch, Essex, Saffron Walden, Essex, Suffolk, CO10 1JG, UK
 website : www.unitascertificationservices.co.uk | email : info@unitascertificationservices.co.uk

ZERTIFIKAT ♦ CERTIFICATE ♦ CERTIFICADO ♦ CERTIFICATE



Certificate of Compliance

Kindly Review the Technical File of Product Copied with the Requirement of the CE MARKING

PROGRESSIVE ELECTRICAL INDUSTRIES
 REGISTERED ADDRESS- GALA NO 001,002,003, B WING, KUSHAL MANGAL INDUSTRIAL ESTATE, TUNGARESHWAR PHATA, VASAI EAST, PALGHAR, MAHARASHTRA, 401208, INDIA.

Has been assessed and found to be in per CE MARKING compliance to the requirement of standard details below.

For The Following Scope Of Activities:-
MANUFACTURING OF ELECTRICAL ACCESSORIES, SWITCHES, WIRE, CABLE & PIPES
APPLICABLE DIRECTIVE- 2006/95/EC

The Certificate body has performed on each of the above product quality system creating the design, assessment and full compliance of the certification. The quality system has been assessed, approved and is subject to continuous surveillance according to the existing conditions.

This certificate is based under the following conditions:

1. Compliance with quality system assessed by the requirement of above technical details does not include the design or production procedures, if required.
2. The certificate design does not for manufacturing conditions in the plant to which is related.
3. The certificate validity is conditional to positive results on surveillance audits. The CE marking does not be used at the responsibility of the manufacturer after completion of CE Declaration of conformity and compliance with all relevant.
4. The assessment is based on a single examination of one sample of above mentioned product. It does not imply assessment of the whole production.

This certificate is property of Unitas Certification Services & remains valid subject to satisfactory surveillance audits.

Certificate No:- 6388 Registration Date:- (20-NOV-2021)
 Surveillance Date:- (20-OCT-2022) Certificate Expiry:- (19-NOV-2024)





The certificate is valid as long as the organization's need unless certification services is requirements. The status of the certificate may be checked at www.unitascertificationservices.co.uk

UNITAS CERTIFICATION SERVICES

Head Office : 14 Riverside Drive, Letch, Essex, Saffron Walden, Essex, Suffolk, CO10 1JG, UK
 website : www.unitascertificationservices.co.uk | email : info@unitascertificationservices.co.uk



PIMPRI CHINCHWAD MUNICIPAL CORPORATION
PIMPRI 411014
 Tel : (020) 6733212/04253631
 Fax : (020) 27425600
 E-mail : pmc@pmc.com
 Website : www.pimpri.chmc.gov.in

No. P/18/2021/0001/1117 Dt. 19/11/2021
 Dt. 01/11/21

To,
 M/s. P/E/E. PROGRESSIVE ELECTRICAL INDUSTRIES LLP
 Kushal Mangal Industrial Estate Co-Operative Society Ltd,
 Ground Floor, Lada No 001, B Wing, Tungareshwar Phata,
 Vasai East, Palghar, Maharashtra, 401208

Subject: Approval to use of material in works control used by Pimpri Chinchwad Municipal Corporation, Pimpri - 18.
 Ref: Your Letter Dated 27/06/2021

Re:
 With reference to the subject cited above, proposal for approval of your products are submitted to you for certified by this office and now the order signed is placed to accord approval to the following materials for using in works control used by Pimpri Chinchwad Municipal Corporation W.U.P. the date of issue of this letter.

Name of Material	Switches, plugs & sockets, Cables, Circuit Breakers (up to 100 A, Plastic) Wire
Place of Manufacture	M/s. UCS, PROGRESSIVE ELECTRICAL INDUSTRIES LLP Kushal Mangal Industrial Estate Co-Operative Society Ltd, Ground Floor, Lada No 001, B Wing, Tungareshwar Phata, Vasai East, Palghar, Maharashtra, 401208
Brand Name	UCS
Technical Specifications	Switches, plugs & sockets, Cables, Circuit Breakers (up to 100 A, Plastic) Wire
Manufacturing Certificate No.	1212044900-02
Authority to Issue M.C.C.	None (Member Industrial Safety and Health, Govt of India)
Manufacturer as per ISI No. 101-102	Yes
ISI No.	IS 2043 (Part 1) IS 2043 (Part 2) IS 1749, IS 1011 (Part 1) IS 1749, IS 416 (Part 1) IS 1011 (Part 1)
PMO approval No.	0/00
MSP approval Validity	0/00

This shows material is valid upto date 19/11/2021 provided the performance of the material during this period remains satisfactory. In case of unsatisfactory performance the approval awarded shall be withdrawn forth with.

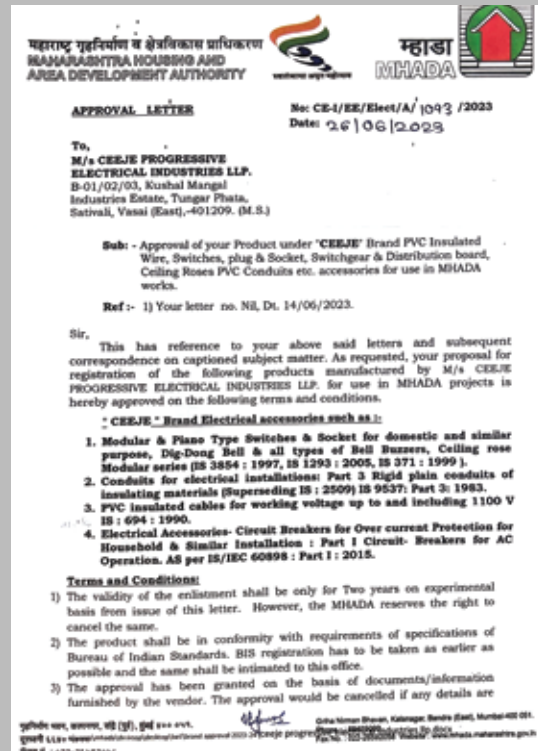
This approval has been granted on the basis of information furnished by you. The approval would be cancelled if any details are found in contrast to the details already furnished during the inspection of manufacturing unit. P.M.C. reserves the right to visit the manufacturing unit at any time.


 Pimpri Chinchwad Municipal Corporation
 Pimpri-18



Copy: Forwarded to the Executive Engineer (A.C.) P.C.M.C. Ward - 3, Pimpri, W.P.18187 for information & copy to Tender Cell.

Date: Executive Engineer (A.C.) Pimpri Chinchwad Municipal Corporation, Pimpri-18.





• **Terms & Conditions:**

- All Prices mentioned are inclusive of GST.
- This Cancels all our previous price list
- Prices are subjected to change without prior notice
- Products with electronic components such as LED Footlights, USB Sockets, Buzzer, Key Tag set, Musical Bell will have warranty period of 2 years on manufacturing defect only.
- All types of Dimmer & Regulators will have warranty period of 5 years on manufacturing defect only
- All types of MCB, Isolators, Change over, RCCB will have warranty period of 2 years on manufacturing defect only
- No goods will be taken back after 5 months from date of invoice
- 10% as maintenance and freight will be deducted on return goods amount on pre-GST value.
- All type of cover plates is non-replaceable and non-refundable



MFG. BY:
CEEJE PROGRESSIVE ELECTRICAL INDUSTRIES LLP
B-001/002/003, Kushal Mangal Industrial Estate,
Tungareshwar Phata, Vasai East-401208
District -Palghar INDIA
PH: + 91- 9820111286

IS: 3854
IS: 1293



CM/L No. 7059775
CM/L No. 7062158



EUROPEAN STANDARD



IS: 1258
IS: 371



CM/L No. 7133258
CM/L No. 7133105

AN ISO 9001:2015 CERTIFIED COMPANY

- Website: www.ceeje.com
- E-mail : info@ceeje.com

• SUBJECT TO MUMBAI JURISDICTIONS